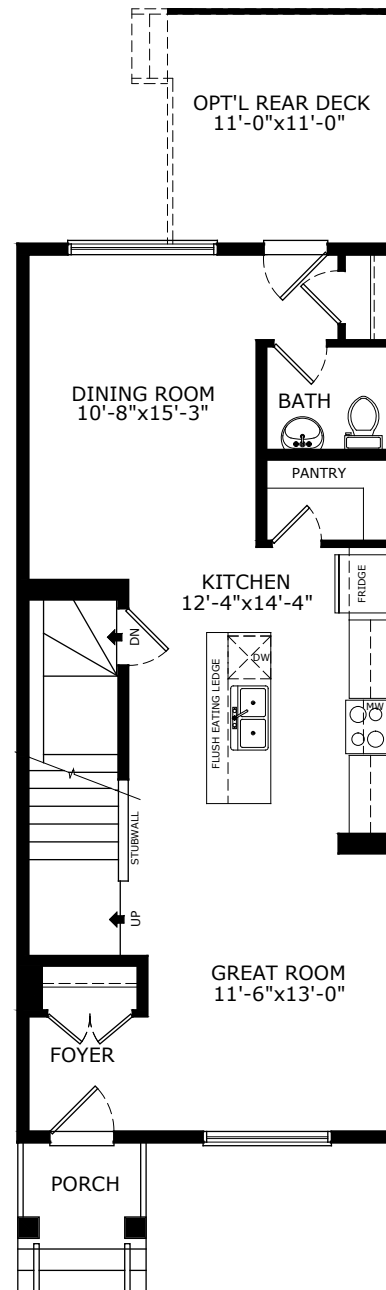
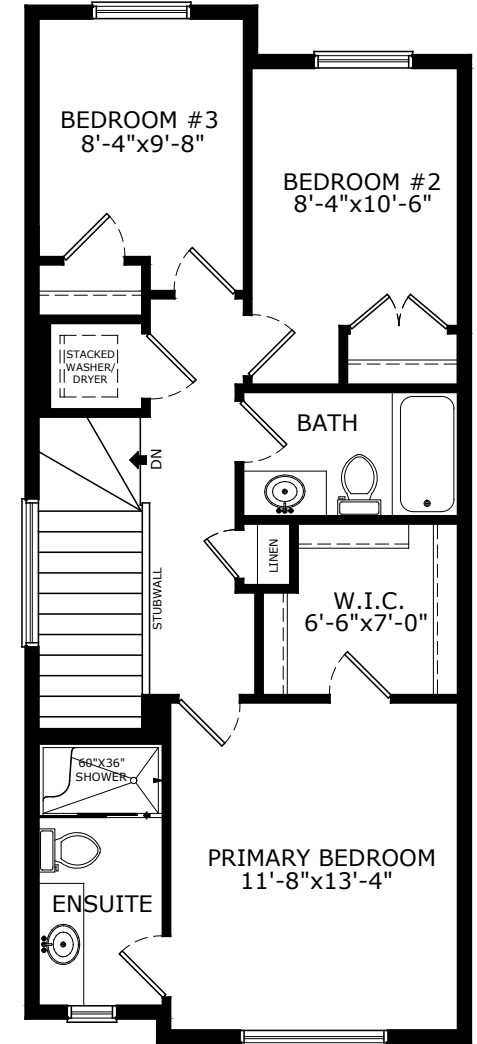


1436 SQ FT  
3 BEDS  
2.5 BATHS

# LINDEN



MAIN: 756 SQ FT



UPPER: 680 SQ FT

# Sterling HOMES

A QUALICO Company

## ELEVATIONS



MODERN FARMHOUSE



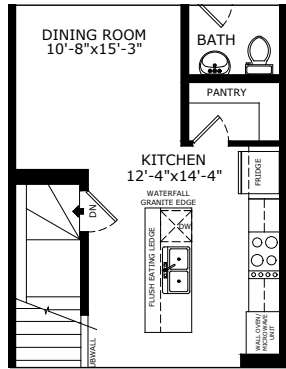
URBAN CRAFTSMAN



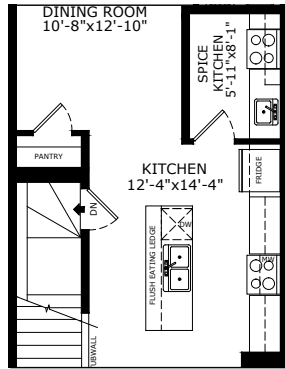
URBAN PRAIRIE

## MAIN FLOOR OPTIONS

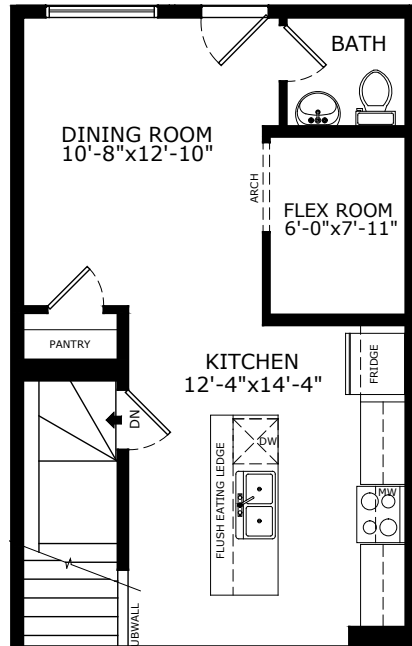
EXECUTIVE KITCHEN



SPICE KITCHEN

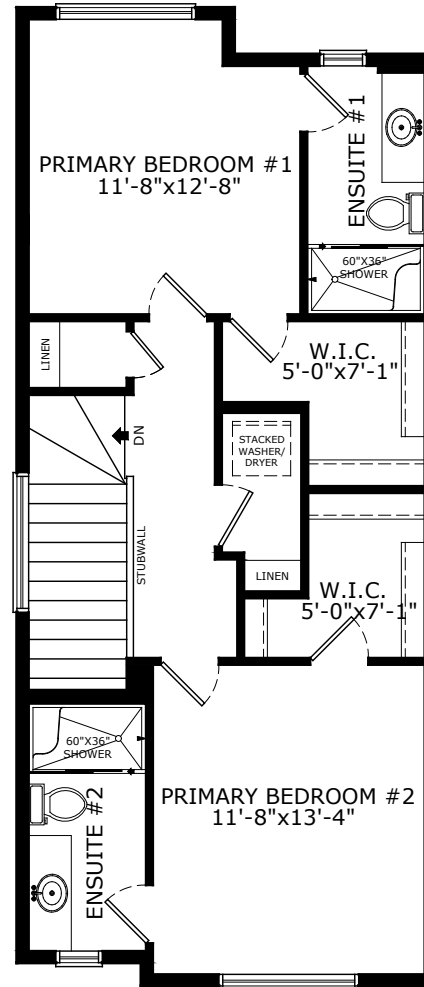


FLEX ROOM



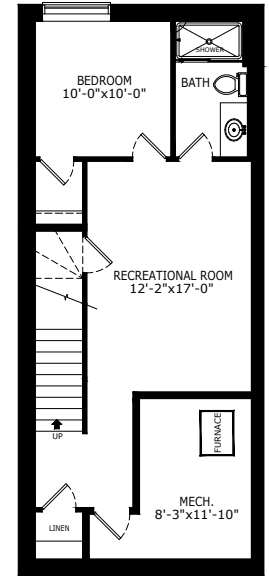
## UPPER FLOOR OPTION

OPTIONAL 2ND PRIMARY BEDROOM

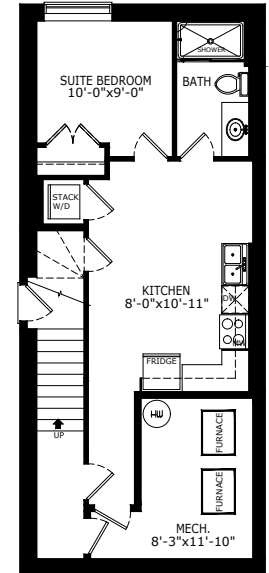


## BASEMENT OPTIONS

STANDARD 509 SQ FT



1 BEDROOM 'LEGAL SUITE' 509 SQ FT



Scan here for floorplan options and more

\*Legal Suite availability varies by community and municipal regulations.

# Build Your Life

STERLINGCALGARY.COM